

**Louisiana Population Data Center
LPDC Reports series, No. 2
December 2004**

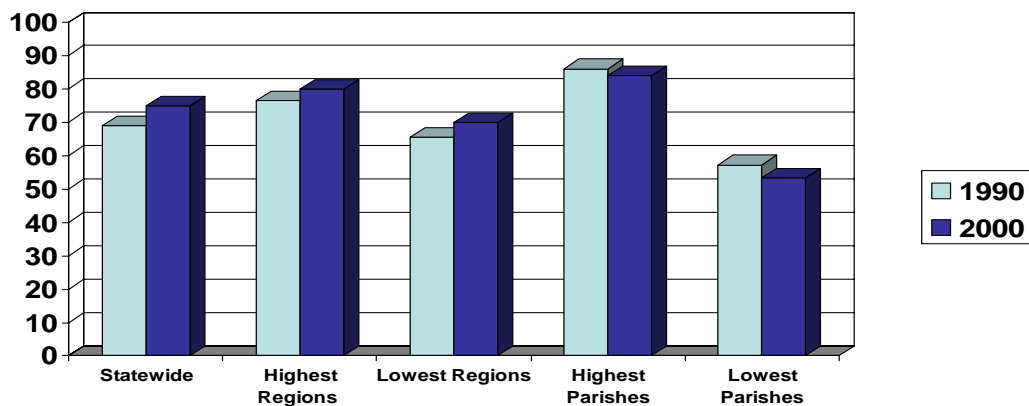
Educational Attainment Trends in Louisiana: 1990-2000

Mark Schafer and Tim Brown

Louisiana's adult population attained higher levels of education over the 1990s, according to census data. More Louisianans age 25 and older had completed high school, attended college, and earned college degrees in 2000 than in 1990.

On this web page we report educational attainment trends for the state and for selected regions and parishes (those with the highest and lowest attainment levels). [Click here to access the parish level data](#)

High School Completion



- Southeast region had the highest percentage for both 1990 and 2000.
- Central region values shown for lowest regions in 1990 and 2000.
- East Baton Rouge parish had the Highest percentage in both 1990 and 2000.
- West Feliciana parish values for 1990 and 2000 shown for lowest parishes.

High School Completion

High school completion opens up more opportunities for employment and college enrollment. Conversely, high school dropout is associated with social problems including poverty, crime, and substance abuse. The high school completion data reported here includes individuals earning an equivalency certificate (e.g., a GED).

State: The number of Louisianans completing high school increased from 1.7 million in 1990 to 2.1 million in 2000. By 2000 75 percent of all adults had completed high school, up from 69 percent in 1990.

Region: The southeast region comprising East Baton Rouge, East Feliciana, Livingston, St. Helena., St. Tammany, Tangipahoa, Washington, and West Feliciana parishes had the highest completion rate in both 1990 and 2000, 76 percent and 80 percent respectively. In 1990, the south-central region including Ascension, Assumption, Iberia, Iberville, La Fourche, Point Coupe, St. James, St John the Baptist, St. Martin, St. Mary, Terrebone, and West Baton Rouge parishes had the lowest adult high school completion at 60 percent. But by 2000, the central region of Avoyelles, Catahoula, Concordia, Grant, LaSalle, Rapides, and Vernon parishes was the region with the lowest high school completion at 70 percent. Regional variation in high school completion, therefore, declined over the course of the 1990s.

The largest regional percent increase for high school completion between 1990 and 2000 is found in the South-central region with a 10 percent increase.

Parish: East Baton Rouge Parish had the highest adult high school completion in both 1990 and 2000. Due to a population increase from 209 thousand to 245 thousand, the completion *rate* actually fell slightly in East Baton Rouge Parish from 86 percent in 1990 to 84 percent in 2000.

In 1990, Evangeline parish had the lowest completion rate, 48 percent. West Feliciana Parish had the lowest adult high school attainment in 2000 at 53 percent. **By 2000, a majority of adults in all Louisiana parishes had completed high school.**

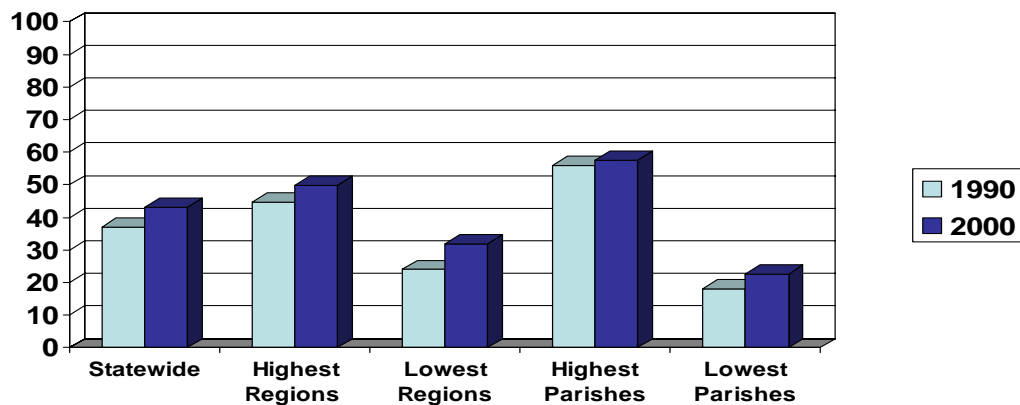
The largest parish increase for high school completion between 1990 and 2000 was found in Iberia parish which had a 21 percent increase.

College

High school completion is a pre-requisite for entering college, but only a little over half of the high school completers had subsequently participated in college.

Moreover, only about half of the college participants had earned a degree (associates, bachelor, or beyond), according to the 2000 Census. But college participation, even without a degree, opens up more opportunities for individuals and, therefore, represents an important level of educational attainment in its own right. Therefore, we report two trends in educational attainment at the college level: (1) college participation, which includes all adults who reported enrolling in any institution of higher education and (2) college degree, including all who earned an associate or higher degree (but not specialty certificates)

College Participation



- The Southeast region had the highest percent in both 1990 and 2000
- The South-central region had the lowest percentage in both 1990 and 2000.
- East Baton Rouge parish had the highest percentage in both 1990 and 2000.
- Assumption parish had the lowest in both 1990 and 2000.

College Participation

State: In 2000 1.2 million reported college participation, 43 percent of the adult population and 57 percent of high school completers. The 2000 figures depict an increase in college participation since 1990

when only 930 thousand adults reported college participation (37 percent of adults, 54 percent of high school completers).

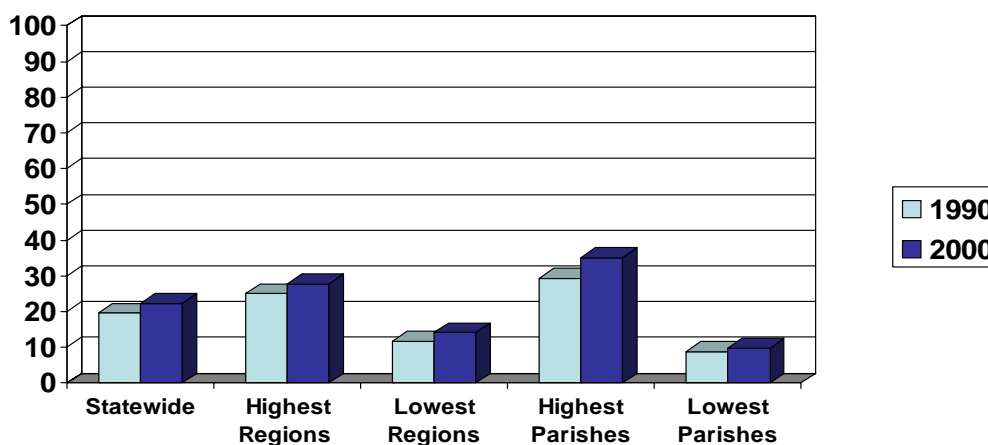
Region: The Southeast region had the highest percentage of college participation in both 1990 and 2000, with 45 percent and 50 percent accordingly. The South-central region had the lowest percentage in both 1990 and 2000, with 24 percent and 32 percent accordingly.

The largest regional increase in college participation between 1990 and 2000 was found in the South-central region which had an 8 percent increase.

Parish: East Baton Rouge parish had the highest percentage of college participation in both 1990 and 2000, with 56 percent and 58 percent accordingly. Assumption parish had the lowest percentage in both 1990 and 2000, with 18 percent and 23 percent accordingly.

The largest parish increase in college participation between 1990 and 2000 was found in Iberia Parish which had a 19 percent increase.

College Degree



- The Southeast region had the highest percentage in both 1990 and 2000.
- The South-central region had the lowest percentage in both 1990 and 2000.
- Lincoln parish values for 1990 and 2000 shown for highest parish rates.
- Assumption parish had the lowest percentage in both 1990 and 2000.

College Degree

State: From 1990 to 2000 the percentage of adults with college degrees increased from 20 to 22 percent. In raw numbers, 490 thousand adults had earned a degree by 1990. That figure increased to 620 thousand by 2000.

The percent of all *college participants* who had earned degrees actually fell slightly from 53 percent in 1990 to 52 percent in 2000.

Region: The southeast region had the highest college degree attainment at 25 percent in 1990 and 28 percent in 2000, respectively. By contrast, the southwest region had the lowest college degree attainment at 12 percent in 1990 and 14 percent in 2000. **These**

figures suggest fairly sharp regional variation in college attainment within the state.

The largest regional increase in college degrees between 1990 and 2000 was found in the North-central region which had a 3 percent increase.

Parish: East Baton Rouge Parish had the highest adult college degree attainment in 1990 at 33 percent. By 2000, Lincoln parish had the highest adult college degree attainment at 35 percent.

Assumption Parish had the lowest adult college degree attainment at 8.7 percent in 1990 and 10 percent in 2000. **Again, the large variation in attainment across parishes, from 9 to 35 percent.**

The largest parish increase in college degrees between 1990 and 2000 was found in Lincoln parish which had a 6 percent increase.

<u>Data for 1990 (State Population of 2,517,054)</u>	<u>Exact Number</u>	<u>Percentage</u>
Less than High School	783,962	31.14%
High School	803,298	31.91%
Some College	437,622	17.38%
Associate's Degree	83,049	3.3%
Bachelor's Degree	267,055	10.6%
Master's Degree or Higher	142,068	5.6%

<u>Data for 2000(State Population of 2,779,484)</u>	<u>Exact Number</u>	<u>Percentage</u>	<u>Percent Change</u>
Less than High School	698,450	25.12%	-6.02%
High School	899,354	32.35%	+4.4%
Some College	566,278	20.37%	+2.99%
Associate's Degree	95,788	3.4%	+1%
Bachelor's Degree	339,711	12.22%	+1.62%
Master's Degree or Higher	180,067	6.4%	+8%